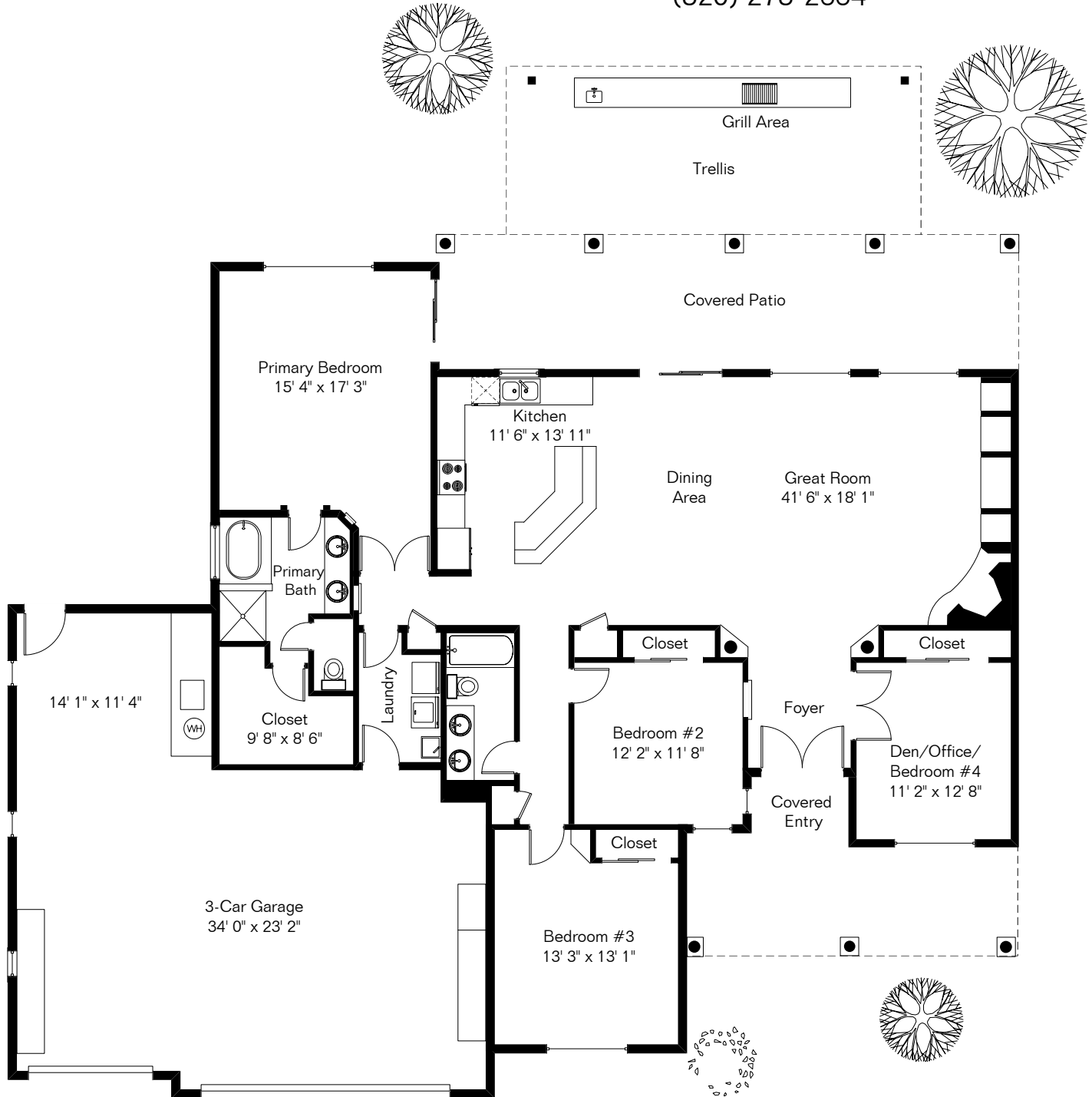


The square footages and room size information are deemed to be reliable but are not guaranteed and should be independently verified. This drawing is for marketing purposes only.

1546 W Placita Sin Nieve

Presented by Pam Treece
Long Realty Company
(520) 275-2664



Site Visit April 2023

0 ft. 6 ft. 10 ft. 20 ft.



Living Area 2,220 Sq Ft
Garage 980 Sq Ft

Copyright 2023 Floor Plans First! LLC
All Rights Reserved.

Floor Plans First!
See the Floor Plan First!
FloorPlansFirst.com
(520) 881-1500